

2.1 SNMPv1 Request or Response PDU

DRAFT

```

V1-RR-PDU ::= SEQUENCE { -- a request or response PDU
    request-id      -- a value specified in a request and returned in the response to a request
                   INTEGER(-2147483648..2147483647), -- NOTE: RFC 1157 specifies no range
    error-status    -- value is not used in processing requests (but should be set to zero)
                   INTEGER {
                       noError(0),
                       tooBig(1),
                       noSuchName(2),
                       badValue(3),
                       genErr(5)
                   },
    error-index     -- value not used in processing requests (but should be set to zero)
                   INTEGER(0..2147483647), -- NOTE: RFC 1157 specifies no range
    v1-variable-bindings -- a list of pairs, each consisting of an OID,
                        -- which is an identity (or approximation) and the
                        -- value (or a placeholder) of an object instance
                   V1-VarBindList
}
    
```

FIGURE 2. SNMPv1 Request or Response PDU

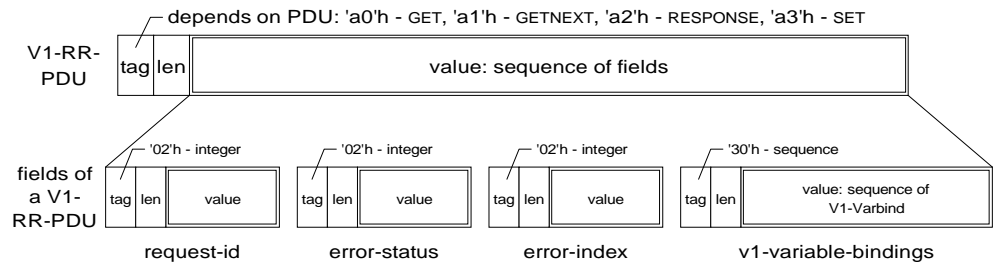


TABLE 2. Tags for SNMPv1 PDU Types

PDU type	Tag
v1-get-request	'a0'h
v1-getnext-request	'a1'h
v1-set-request	'a2'h
v1-get-response	'a3'h
v1-trap	'a4'h